

Acidentes ocorridos nas Rodovias Federais em 2005.

Rodovia BR 365 – MG

(Extensão 712 Km)

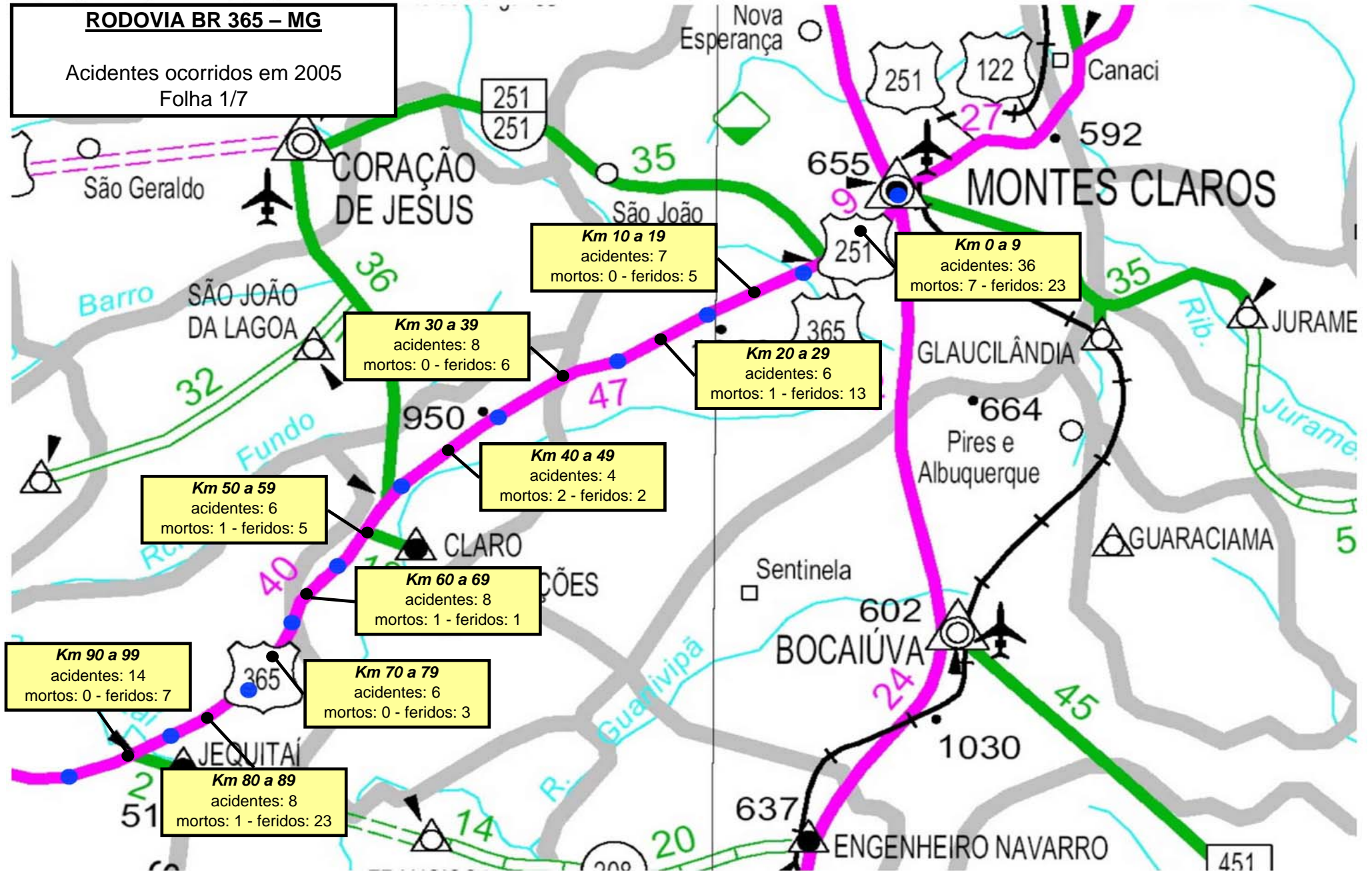
Estatísticas disponíveis somente até o km 712. Além deste ponto, a rodovia coincide com outras rodovias federais (BR 154, BR 364), nas quais os acidentes são registrados.

Resumo

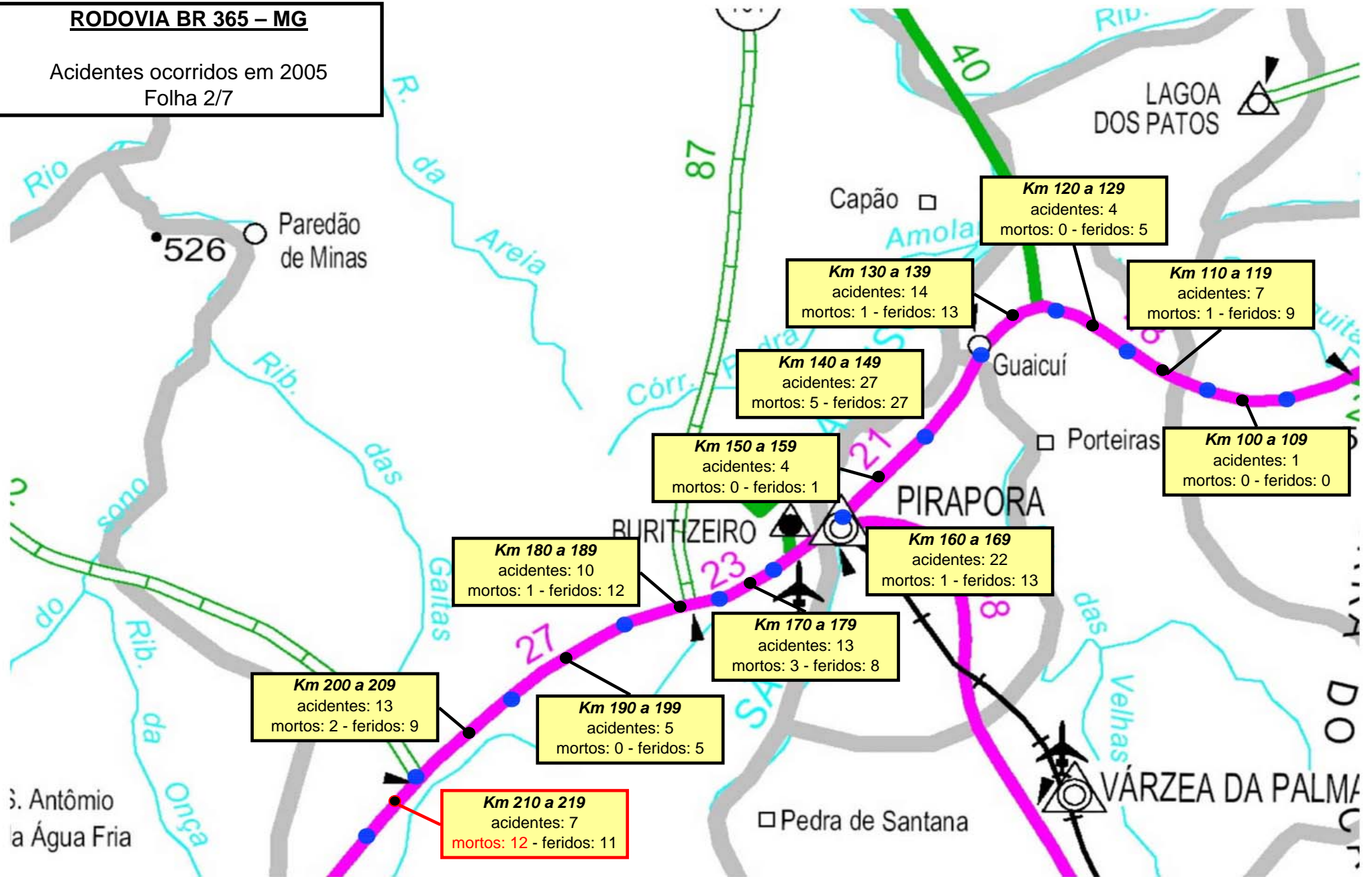
842 Acidentes

82 Vítimas Fatais

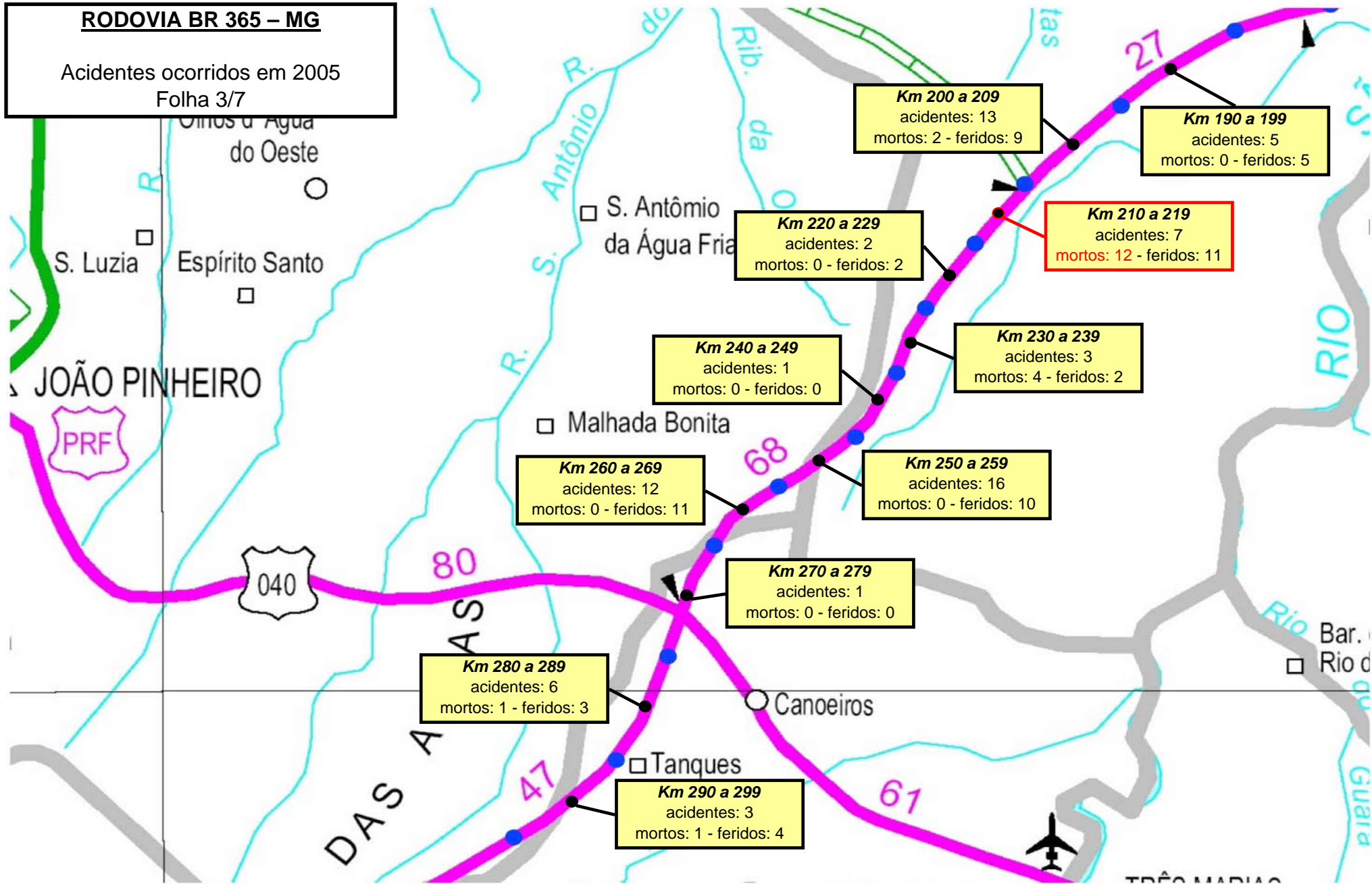
616 Feridos

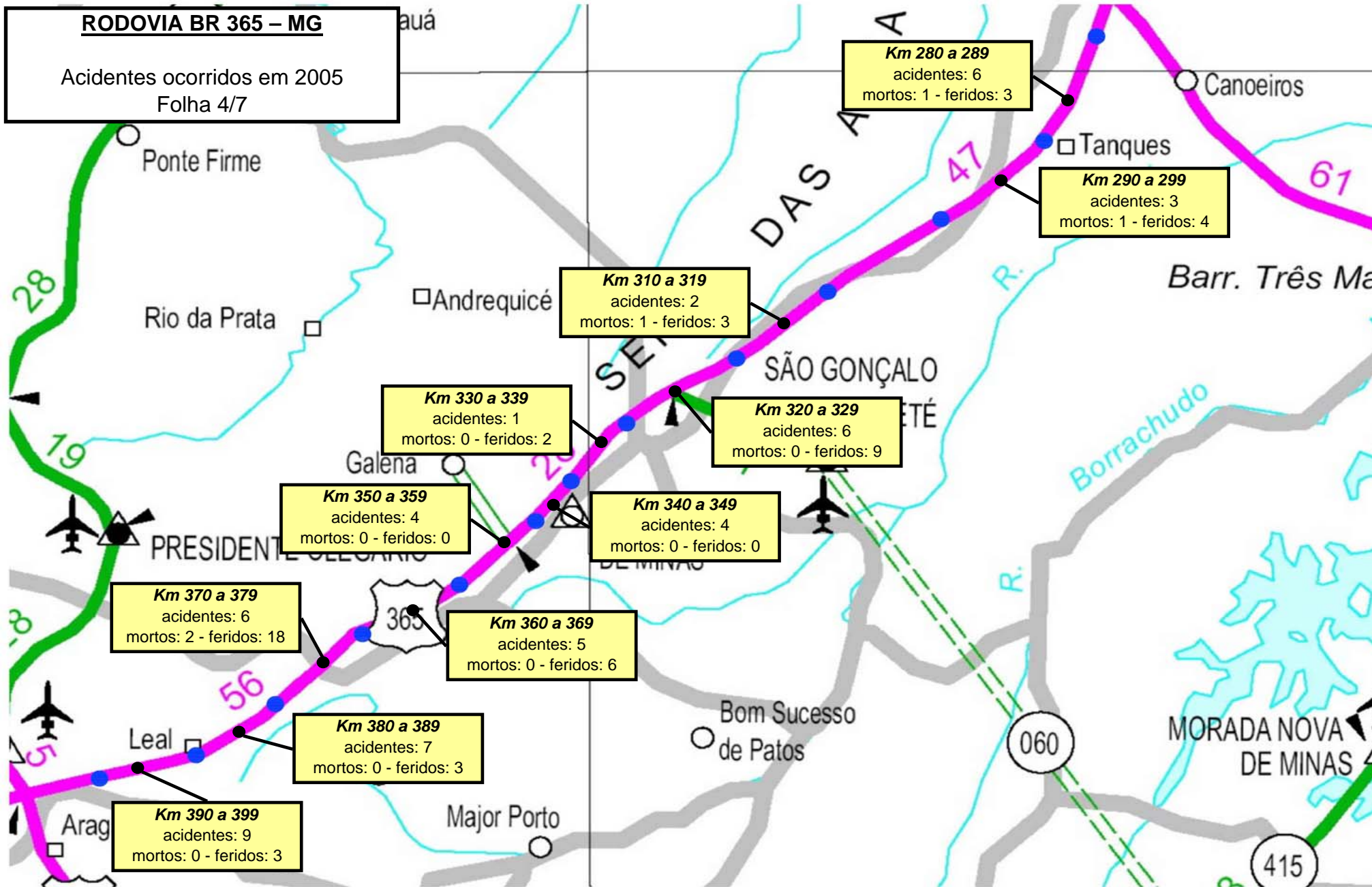


RODOVIA BR 365 – MG
 Acidentes ocorridos em 2005
 Folha 2/7



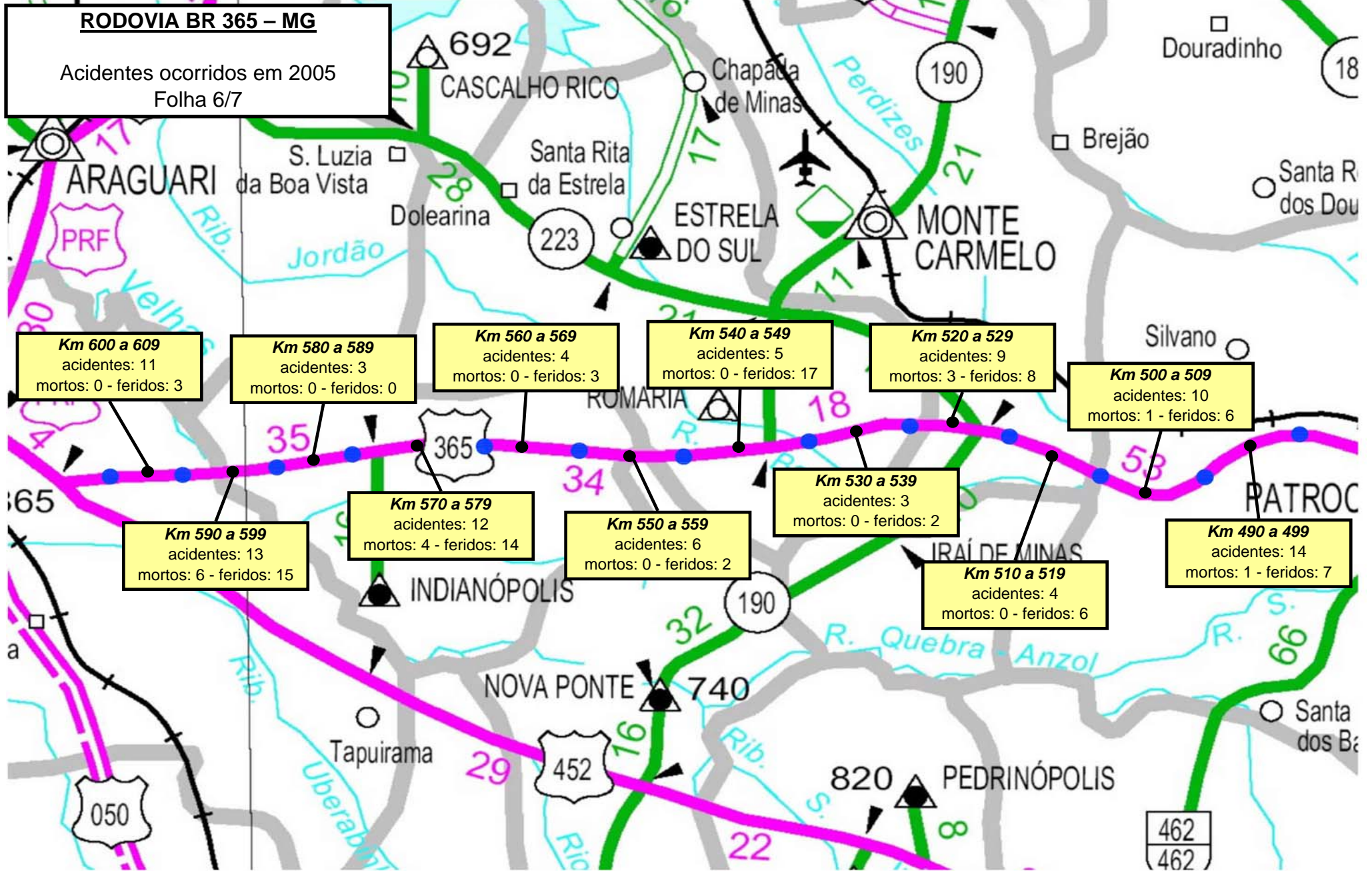
RODOVIA BR 365 – MG
Acidentes ocorridos em 2005
Folha 3/7

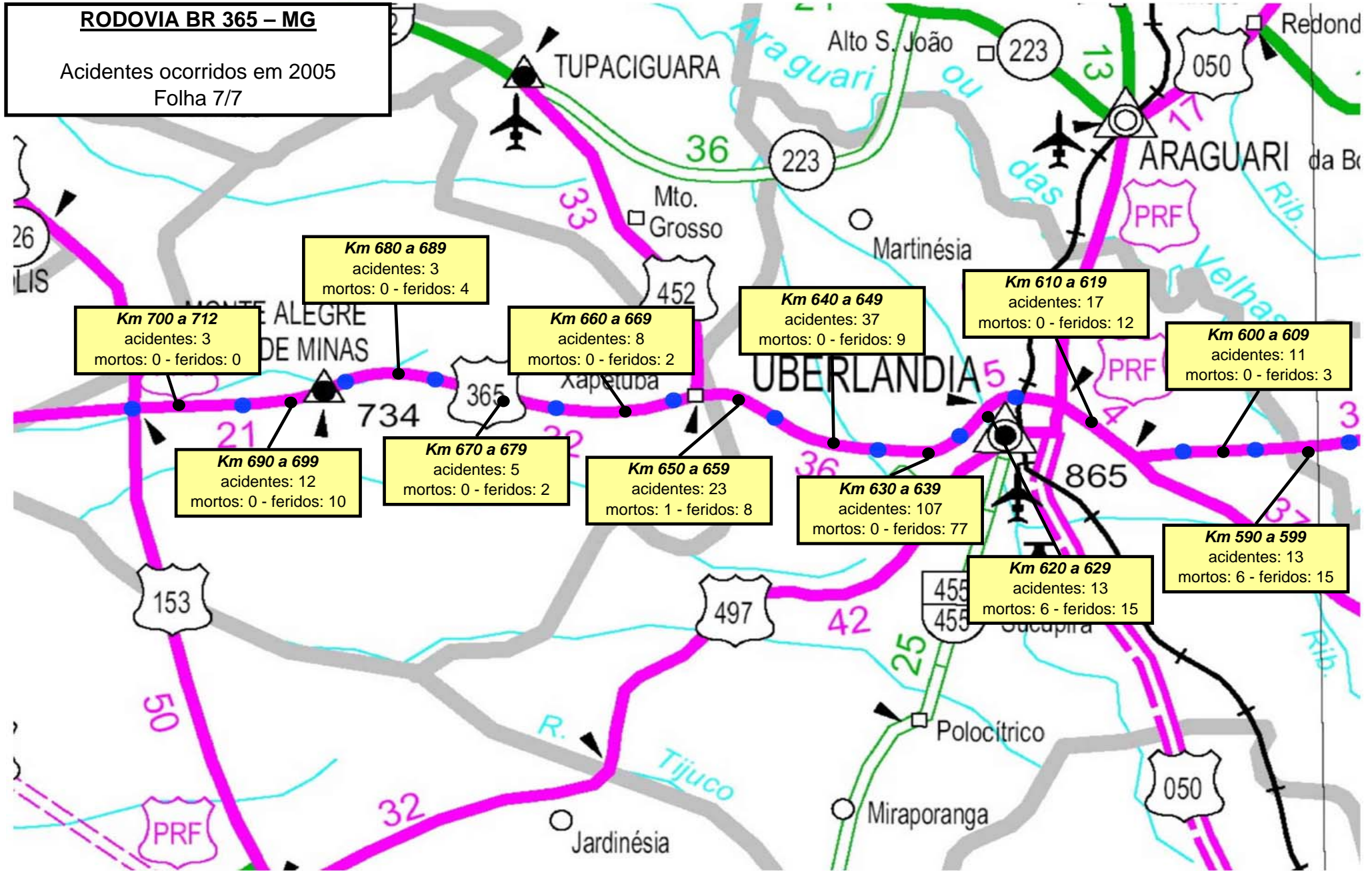




RODOVIA BR 365 – MG
Acidentes ocorridos em 2005
Folha 5/7





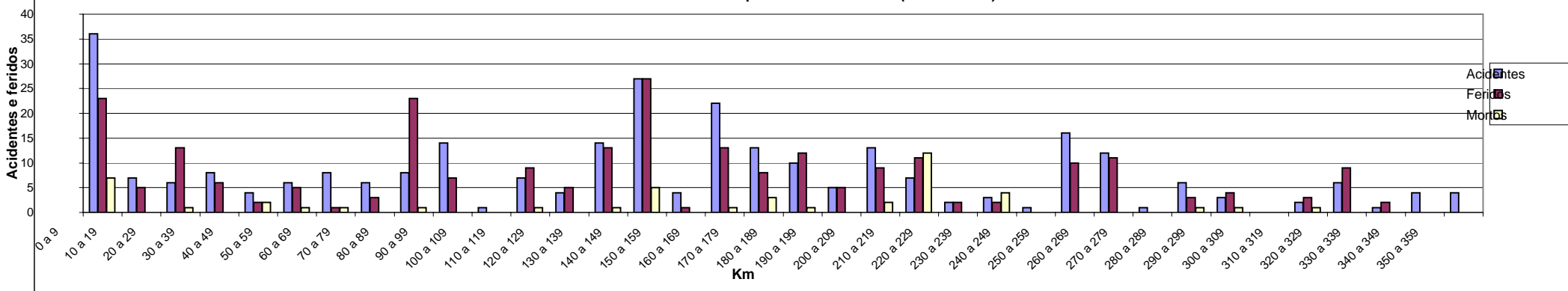


Acidentes ocorridos em 2005.

Km	0 a 9	10 a 19	20 a 29	30 a 39	40 a 49	50 a 59	60 a 69	70 a 79	80 a 89	90 a 99	100 a 109	110 a 119	120 a 129	130 a 139	140 a 149	150 a 159	160 a 169	170 a 179	180 a 189	190 a 199	200 a 209	210 a 219	220 a 229	230 a 239	240 a 249	250 a 259	260 a 269	270 a 279	280 a 289	290 a 299	300 a 309	310 a 319	320 a 329	330 a 339	340 a 349	350 a 359	
Acidentes	36	7	6	8	4	6	8	6	8	14	1	7	4	14	27	4	22	13	10	5	13	7	2	3	1	16	12	1	6	3	0	2	6	1	4	4	
Feridos	23	5	13	6	2	5	1	3	23	7	0	9	5	13	27	1	13	8	12	5	9	11	2	2	0	10	11	0	3	4	0	3	9	2	0	0	
Mortos	7	0	1	0	2	1	1	0	1	0	0	1	0	5	0	1	3	1	0	2	12	0	4	0	0	0	0	1	1	0	1	0	0	0	0	0	0

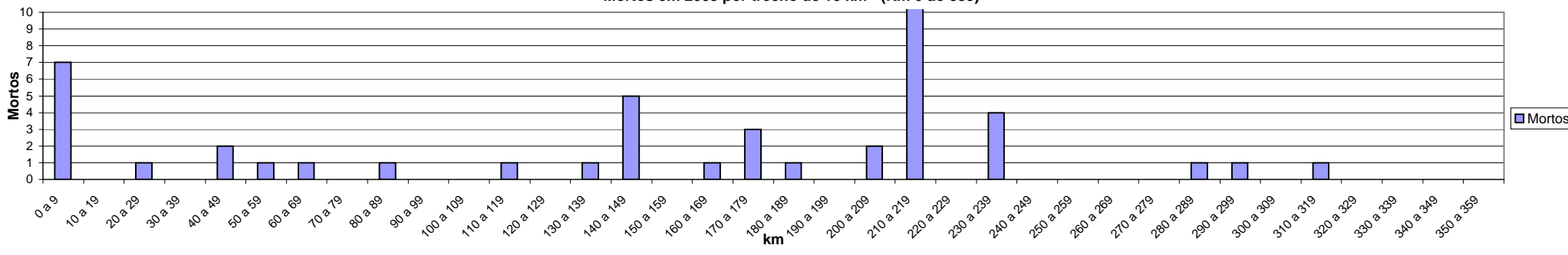
0 2

Acidentes e feridos em 2005 por trecho de 10 km - (Km 0 ao 359)



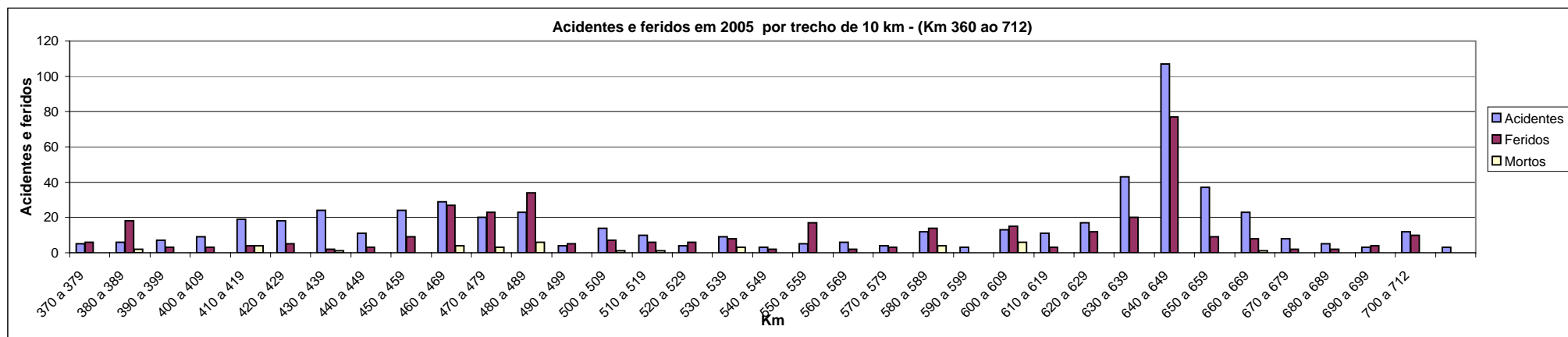
Km	0 a 9	10 a 19	20 a 29	30 a 39	40 a 49	50 a 59	60 a 69	70 a 79	80 a 89	90 a 99	100 a 109	110 a 119	120 a 129	130 a 139	140 a 149	150 a 159	160 a 169	170 a 179	180 a 189	190 a 199	200 a 209	210 a 219	220 a 229	230 a 239	240 a 249	250 a 259	260 a 269	270 a 279	280 a 289	290 a 299	300 a 309	310 a 319	320 a 329	330 a 339	340 a 349	350 a 359	
Mortos	7	0	1	0	2	1	1	0	1	0	0	1	0	5	0	1	3	1	0	2	12	0	4	0	0	0	0	0	1	1	0	1	0	0	0	0	0

Mortos em 2005 por trecho de 10 km - (Km 0 ao 359)



Acidentes ocorridos em 2005.

Km	360 a 369	370 a 379	380 a 389	390 a 399	400 a 409	410 a 419	420 a 429	430 a 439	440 a 449	450 a 459	460 a 469	470 a 479	480 a 489	490 a 499	500 a 509	510 a 519	520 a 529	530 a 539	540 a 549	550 a 559	560 a 569	570 a 579	580 a 589	590 a 599	600 a 609	610 a 619	620 a 629	630 a 639	640 a 649	650 a 659	660 a 669	670 a 679	680 a 689	690 a 699	700 a 712	
Acidentes	5	6	7	9	19	18	24	11	24	29	20	23	4	14	10	4	9	3	5	6	4	12	3	13	11	17	43	107	37	23	8	5	3	12	3	
Feridos	6	18	3	3	4	5	2	3	9	27	23	34	5	7	6	6	8	2	17	2	3	14	0	15	3	12	20	77	9	8	2	2	4	10	0	
Mortos	0	2	0	0	4	0	1	0	0	4	3	6	0	1	1	0	3	0	0	0	0	4	0	6	0	0	0	0	0	1	0	0	0	0	0	0



Km	360 a 369	370 a 379	380 a 389	390 a 399	400 a 409	410 a 419	420 a 429	430 a 439	440 a 449	450 a 459	460 a 469	470 a 479	480 a 489	490 a 499	500 a 509	510 a 519	520 a 529	530 a 539	540 a 549	550 a 559	560 a 569	570 a 579	580 a 589	590 a 599	600 a 609	610 a 619	620 a 629	630 a 639	640 a 649	650 a 659	660 a 669	670 a 679	680 a 689	690 a 699	700 a 712	
Mortos	0	2	0	0	4	0	1	0	0	4	3	6	0	1	1	0	3	0	0	0	0	4	0	6	0	0	0	0	0	0	1	0	0	0	0	0

